



SPOOM

Mid-Atlantic Chapter

January 2012



Peirce Mill
Photo: Steve Spring

Mid-Atlantic SPOOM Chapter Spring Meeting

Peirce Mill, Washington DC

--Adam Siemanski

In cooperation with the National Park Service and the staff of Rock Creek Park, the Friends of Peirce Mill will host an all-day SPOOM-MA meeting on Saturday, March 24.

Built by Isaac Peirce circa 1829, Peirce Mill is the last of eight mills originally located along Rock Creek in the nation's capital. It is the major surviving structure of the Peirce Plantation that once covered a major portion of what is now Rock Creek Park.

Tentative Schedule:

- 8:30am** **Gather for Coffee & Danish at the Rock Creek Park Nature Center**
5200 Glover Road NW, Washington DC 20015
(near the intersection of Military Road and Oregon Avenue; free parking)
(Driving is recommended; public transportation to the Center is difficult)
Tour the Nature Center exhibits
<http://www.nps.gov/rocr/planyourvisit/naturecenter.htm>
- 9:00** **SPOOM-MA Business Meeting, Nature Center Auditorium**
- 10:00** **Break**

...cont'd P. 2

Mid-Atlantic SPOOM Meeting (cont'd)

- 10:15 Peirce Mill – 200 Year's in the Nation's Capital**
-Steve Dryden, Program Manager, Friends of Peirce Mill
A colorful talk on the history of the mill, the Peirce family, and their ties to Washington, DC
- 11:15 Mills of Rock Creek Valley**
-Anthony Linton, Rock Creek Park
A fascinating look at the old mills that once lined the banks of Rock Creek.
- Noon Box Lunch provided by FOPM, Nature Center Auditorium**
- 1pm Depart for Peirce Mill (carpooling suggested; parking more limited)**
- 1:30 Tours of Peirce Mill, and Peirce Barn visitor's center**
2401 Tilden Street NW, Washington DC 20008
(near intersection of Beach Drive and Park Road)
<http://www.nps.gov/pimi/index.htm>
Mill will be operating.
Exterior: Headrace, flume, breast-shot wheel, and water recirculating system
Interior: All four floors will be open for inspection.
Gear pit with main shaft, pit gear, spur gear and stone nuts for stones #1 and #2, with "Ellicott drive" system that powers the third set of millstones.
Main floor: three run of stones and various milling controls & mill furniture
Second floor: grain bins, bolter, bulk storage bin
Third floor: Elevator grain distributor (consignor), grain cleaner, hopper boy.
- 3:30 Adjourn**

For the purpose of having sufficient refreshments and lunches, please contact Judy Grove at JudyGrove@Verizon.net or 717-741-4366 by March 17, if you are planning on attending. Registration cost to cover morning refreshments and lunch is \$10, payable at the meeting.

Mid-Atlantic SPOOM Meeting (cont'd)

Accommodation

The most convenient accommodation to Peirce Mill is:

**Day's Inn Connecticut Ave
4400 Connecticut Avenue, N.W.
Washington, DC 20008
<http://www.dcdaysinn.com/>**



Also convenient would be any hotel claiming to be near the Washington Zoo.

Reaching the Nature Center is difficult by public transportation: driving is recommended. There is ample free parking at the Nature Center and limited but adequate parking for carpools at the mill.



From the Desk of the President

-- Robert Lundegard

2012 will be my last year as president of the Mid-Atlantic Chapter. We have made progress in representing the preservation and presentation of the historic mills of our region. Our leadership group of Officers and Board members is substantial and capable of continuing the growth of our programs. At the March 24, 2012 meeting, I will appoint a Chairperson of a Nominating Committee to prepare a slate of candidates for the officer positions to be filled for the 2013-2014 term. I hope every member can participate in the nomination process.

In addition to the Officers & Board Members, I want to recognize the several public mills that have been our Sponsors as Organization Members of the Chapter. These Sponsors have made the development of our web site, www.spoommidatlantic.org, a reality. The web site continues to grow in the capable hands of Judy Grove and the new contractor FACE Websites. The web site gives visibility to our Sponsors and their programs, provides news of Chapter activity, is an archive of mill photos and mill history, and provides the tools for the efficient administration of Chapter business. Soon we will be able to pay Chapter dues on-line. The web site archive may, in the future, be able to extend the impact on the SPOOM Archive at Newlin Mills.

The Chapter has other accomplishments to keep in mind. I note a few:

- The program, under Ivan Lufriu, of providing guidance to mill restoration efforts. Ivan reports on the progress of this program at each Chapter meeting.**
- The newsletter, under Susan Langley, that collects news and photos from members and other sources to keep us informed in a timely fashion.**
- The publication of meeting minutes, by Judy Grove, for the SPOOM Secretary as required by the SPOOM By-Laws. The By-Laws are available on our web site.**
- The publication, by Bob McLaughlin, of Chapter reports for each issue of *Old Mill News*.**

...cont'd P. 5

From the Desk of the President (cont'd)

- The design and publication of the SPOOM rack card, now provided free by the SPOOM Bookstore, to all public historic mills.
- The hosting of Chapter bi-annual meetings by member mills that include business, food, pleasure, and tours of local mills and other interesting sites.
- The development, with the Friends of Colvin Run Mill and the Northern Virginia Community College, of a web based mill mapping and cataloguing system to provide on-line access to the American mill data base. This system has been called the "virtual Fred Beals".

The Chapter has much to be proud of and to continue.



Nittany Antique Machinery Association

--Bob McLaughlin

The Nittany Antique Machinery Association in Centre Hall, PA has cut the timbers for the hurst frame for their corn mill. Bob McLaughlin is working on them this winter and is hoping to be able to assemble the frame next spring.

◀ The Nittany Antique Machinery Association cutting timbers for their corn mill at their fall show in September 2011.

Photo: Bob McLaughlin

Double Mills, Inc., will be hosting the August, 2012, meeting of SPOOM-MA!

--Stephanie Elliott

The Double Mills Grist Mill is located in Mardela Springs, Md., on the Barren Creek. The current structure dates from the 1870's with renovation, including an addition, completed in 1935. Our group has been working on its restoration since 2007, and we are currently in the second phase which will see the foundation and roof replaced. The mill building has been lifted off its foundation since August, 2008, while we have been raising necessary funds to have a new cement foundation poured, which includes the walls of the first level. The raceway, damaged in a 1979 storm, will be replaced in a future phase. We are glad to report that we are in the process of securing a date for the foundation work to begin, and plan to follow up with a new roof shortly thereafter. The mill has its original equipment and its turbine, which has been buried in mud for 32 years. It is thought all to be in restorable condition.



☞ Save the Date ☞
40 YEARS OF SPOOMING!
2012 ANNUAL CONFERENCE AND MILL TOUR
BUCKS COUNTY, PA
SEPTEMBER 27-30

--Charles Yeske

The 2012 conference and mill tour is shaping up to be a great time for all who can make it. Mills to see, interesting activities and events, reasonable accommodations, good food, and good cheer await registrants. While final plans have not been fixed, the tentative schedule will hopefully prompt you to circle the date on your calendars.

Mills included on the two-day mill tour (Friday/Saturday) are the Mill at Anselma, Bowmansville Mill, Evans-Mumbauer Mill, Ralston Cider Mill, Cooper Mill, Stover Mill and Stover-Myers Mill – all but the Stover Mill will be operating.

Thursday's fee-based pre-tour activities offered will include archival research and collection care at Newlin Mill, beer brewing and open hearth baking at Pennsbury Manor, a talk on historical aspects of grain production and milling also at Pennsbury, a tour of Bucks County's 11 covered bridges, and visits to Doylestown's four museums – Mercer Museum, Fonthill Castle, Moravian Pottery & Tile Works, James A. Michener Art Museum.

For those planning on more time in the area, loads of historic sites, lovely country drives, good dining, antiques and art galleries abound. Who knows, you could even strike it rich at a casino practically in the hotel's backyard!

Other plans include a country supper picnic Friday and the customary banquet, with a keynote address, on Saturday. Exhibitors are being invited, and a photo contest will be staged.

So, save the date, then come on and help blow out the 40 candles on SPOOM's birthday cake that we'll have!

For more information contact Charles Yeske, Conference Coordinator, cjyeske@co.bucks.pa.us; 267-337-0955.

The SPOOM Mid-Atlantic & Friends of Colvin Run Mill Map Project

-- Robert Lundegard

Our Chapter meeting in August and the SPOOM national meeting in September brought together millers, mill owners, and mill enthusiasts for programs of relevant talks and explorations of local mills. Much excitement was generated by the presentations of Professor Michael Krimmer and Charlotte Cain on our Historic Mill Mapping Project. This project is a collaborative effort of the Mid-Atlantic Chapter, the Friends of Colvin Run Mill, and the Northern Virginia Community College.

So far, the project has produced two large color maps of 1860 era water-powered mills – a map of the mills in Fairfax County and a map of the mills in the Potomac and Shenandoah water sheds. But, the exciting component is the Internet power behind the maps. Each mill site on the Fairfax County map has a large data base accessed by clicking on the mill location. Each site on the watershed map, which encompasses a much larger area and many more mills, has a smaller data base also accessible by clicking on the mill location. The imbedding of the map data in an Internet system is currently only available to the developers but within the year will go on-line for public use.

The next phase of the historic mill map project will involve making this information available on the internet by creating a on-line web site. For this, we will need some funding for student expenses -- students are cheap, but they are not free. We have received a wonderful product and an expansion of SPOOM's visibility and influence for a pittance of the cost of commercial production. Now, we will be looking for financial help to continue this endeavor and take us into the 21st century. Help may come from York County, PA and Loudoun County, VA who are attracted to the map project and may choose to extend the data base and maps to their regions. We plan to present the on-line system at the SPOOM national meeting in September.

****The map on the following page is one of those produced by this project. It is the property of the Friends of Colvin Run Mill and may not be reproduced, copied, forwarded, or otherwise used without the express permission of the Friends of Colvin Run Mill.****

...cont'd P. 7

19th Century Mills in the Potomac and Shenandoah Watersheds



"Steam Mill, Assembly Street, 1860s. (From Historical 1860s). Part of the J. P. Morgan collection of Civil War drawings, Library of Congress."



"Mill with large water wheel, 1860s. (From Historical 1860s). Part of the J. P. Morgan collection of Civil War drawings, Library of Congress."



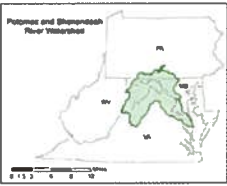
"Steam Mill, with mill race, 1860s. (From Historical 1860s). Part of the J. P. Morgan collection of Civil War drawings, Library of Congress."



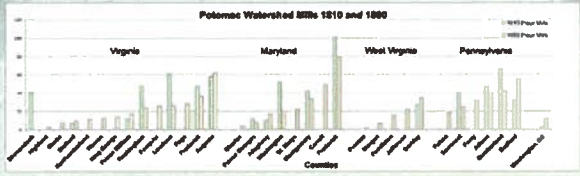
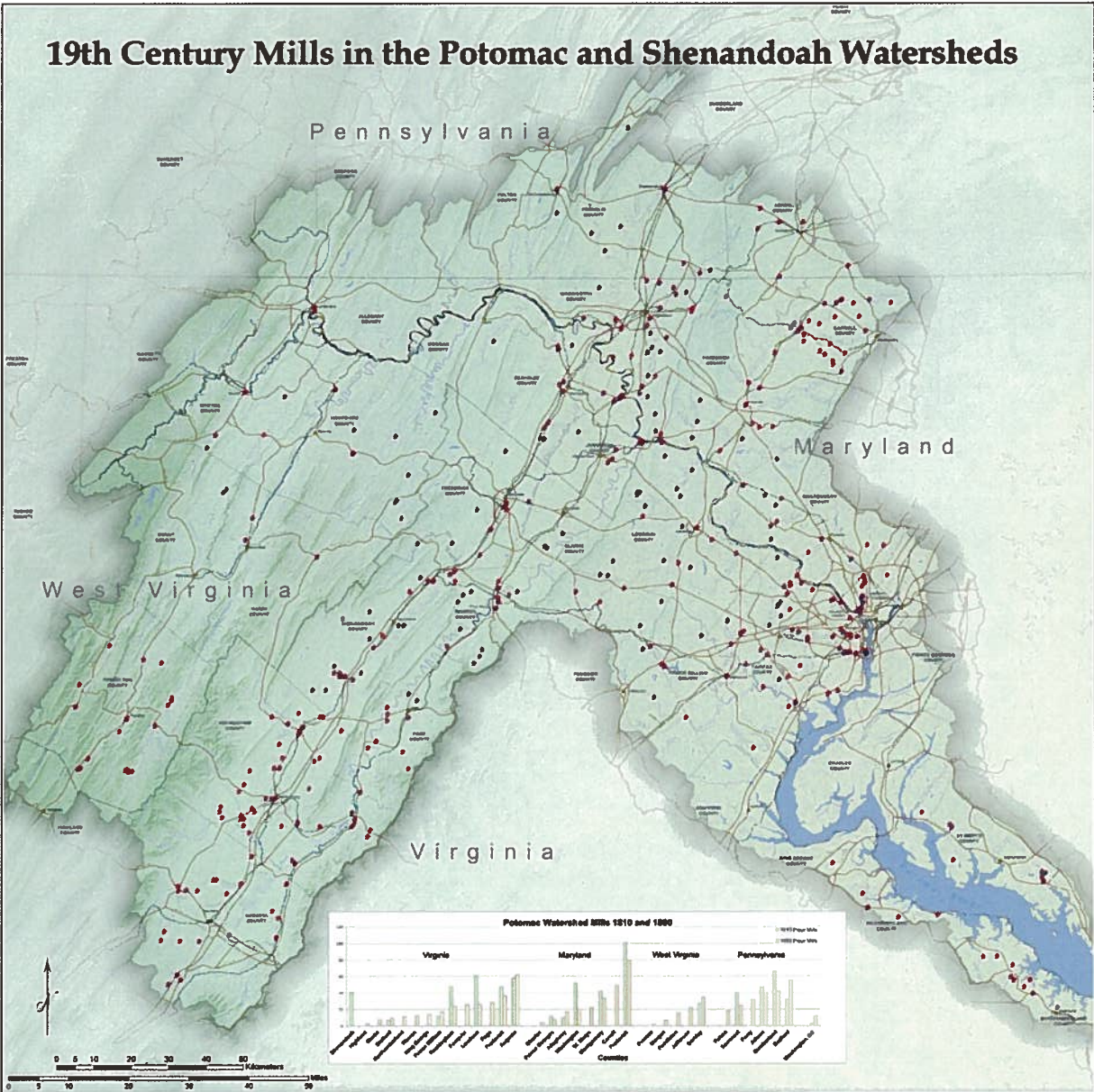
"Mill, Sandy Hook, Md., 1860s. (From Historical 1860s). Part of the J. P. Morgan collection of Civil War drawings, Library of Congress."



"Mill, 1860s. (From Historical 1860s). Part of the J. P. Morgan collection of Civil War drawings, Library of Congress."



Potomac and Shenandoah River Watersheds. Scale: 0 1 2 3 4 5 6 7 8 9 10 Miles."



"Mill with large water wheel, 1860s. (From Historical 1860s). Part of the J. P. Morgan collection of Civil War drawings, Library of Congress."



"Mill with large water wheel, 1860s. (From Historical 1860s). Part of the J. P. Morgan collection of Civil War drawings, Library of Congress."



"Mill with large water wheel, 1860s. (From Historical 1860s). Part of the J. P. Morgan collection of Civil War drawings, Library of Congress."



"Mill with large water wheel, 1860s. (From Historical 1860s). Part of the J. P. Morgan collection of Civil War drawings, Library of Congress."

- Mill Location
- County Seat
- County Lines
- Road
- Major Road
- Railroad
- Canal
- Elevation

The Society for the Preservation of Old Mills
<http://www.spom.org>

The Society also hosts an SPOOM week observed in late May as a non-profit organization in 1972. Its members include mill owners, old mill buffs, museum curators, conservators, writers, teachers, artists, photographers, equipment repair firms, and manufacturers, such as antique membership a spot in any individual who shares the interests and purposes of SPOOM.

Friends of Cabin Run Mill
<http://www.friendsofcabinrunmill.org>

Friends of Cabin Run Mill (FOCRM) is dedicated to preserving the technological and industrial heritage of Northern Virginia for future generations. Cabin Run Mill, Fairfax County's award-winning historical gristmill complex of 19th century water-powered gristmilling technology is the best place for educating visitors and families about early life in our community.

BUCKLAND MILL

-- Marjorie Lundegard

To reach Buckland Mill from Fairfax County, take highway 29 west to Gainesville. Five miles west of Gainesville, you will cross Broad Run. Immediately after crossing the bridge, turn right into the incorporated town of Buckland; the mill is at the very end of the Main Street. At one time, there were over fifty mills alongside Broad Run, but most of these disappeared around 1900.

The mill was built by John Love around 1790 and is also known as Calvert's mill. It is a three storied frame structure that is now painted a gray color with a blue trim. There is a stone foundation under the mill and a gable roof on the building. The present mill is not the original 1790 structure but one that was built on the site around 1850. The dam has now been washed away. The headrace appears to have come into the building on the upper side, away from the river. The mill was powered by a turbine. There is no mill machinery on the first floor, which is now being used for storage, but there is some machinery on the second floor. On the top level of the mill is the sifting equipment which is still intact. Judging from the size of the mill, this was probably a merchant mill. The miller's house, a frame structure, is close by. The house has been enlarged from the original structure.

The town of Buckland was incorporated in 1798. At that time there were twenty houses, a mill, and a tavern. In 1853 some of this land was transferred to Richard Bland Lee. Today, there are five or six houses, the newest of which is seventy five years old. Dr. Brown built a house here in 1793, and it is still a beautiful place. The house is a major part of the town today. There was also a general store, which is now a home. The minister of the Church was also the town blacksmith. If you wanted to get shoes for your horse, or other blacksmith work done, you'd best get to church on Sunday.

The so called tavern was actually a home. Many people who traveled the Alexandria-Warrenton turnpike found this a convenient stopping place. It was also the stage coach stop. When staying here, the travelers would sleep outside if the weather was good.



Photo: Steve Spring

...cont'd P. 9

BUCKLAND MILL (cont'd)

Buckland is also known for its red sandstone tavern: "The Tavern of the Three Generals"- General Washington, General Lafayette and General Tom Thumb. This is a very old historic town and makes a visit to Buckland very enjoyable. You'll find everyone in the community friendly and helpful. The village of Buckland is a photogenic site well worth the trip.

Reprinted with permission from: *Colvin Run Mill News*, Winter, 2012.



Molinology Calendar

Keep track of all your Mill-related activities with a TIMS calendar. Download this for FREE at:

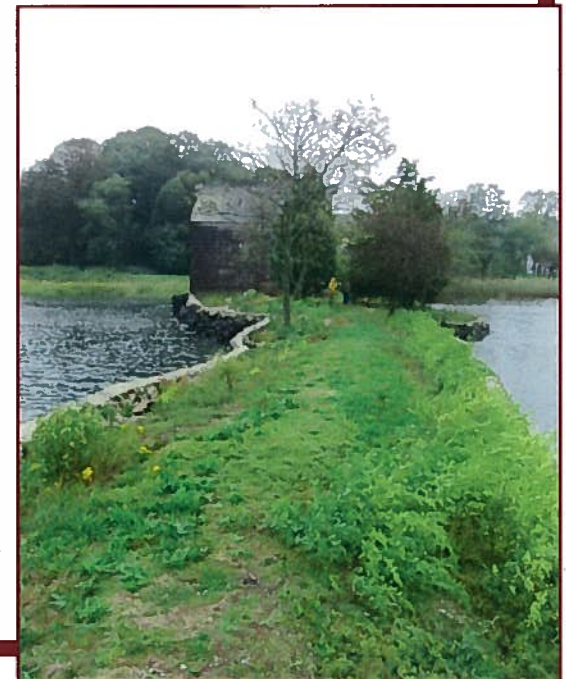
<http://www.molinology.org/pdf-files/TIMS%20calendar%202012.pdf>

Tide mill seeking a new owner. Huntington, New York

The Van Wyck- Lefferts tide mill may be yours for the taking! It has sat quietly since 1793 on a picturesque dam at Lloyd Harbor, Long Island. More than a decade ago the mill building was stabilized and recently its owners, the Nature Conservancy did a major repair of the dam, which had badly deteriorated and has recently been overtopped by higher tides. Because its mission does not include maintenance of historic structures, the Conservancy has been seeking a new owner, preferably a non-profit group that would leave it at the original site or move it to another suitable location.

From the *Tide Mill Times*, December, 2011.

(http://sz0149.wc.mail.comcast.net/service/home/~/TMInewsletterDEC2011.pdf?auth=co&loc=en_US&id=173406&part=2)



Check out mill preservation activities in the Mid-Atlantic area by going to: www.spoommidatlantic.org and clicking on "More Information/Newsletters."



Newsletter

Articles, photographs, and upcoming events are due to Susan by April 6th, 2012 for the next newsletter. Don't forget photo credits/captions. Please use Word documents and jpgs whenever possible as pdf's are v. difficult to use. Also, please remember to let everyone know about Spring Flings, Craft Sales, Pancake Breakfasts and all the fun and fundraising activities out there, as well as all the news and events related to your mills or mills in your neighborhood. Email to: slangle06@comcast.net.



\$\$ MEMBERSHIP DUES \$\$

SPOOM Mid-Atlantic Memberships run on the calendar year. If you have not already paid your dues for the current year, please use the attached form to do so. Additional forms may be downloaded from our website. (Coming soon: Use a credit card to renew through our www.spoommidatlantic.org website.) Payments for each year may be sent beginning January 1. Individual memberships are \$10 with current SPOOM membership or \$15 without. Sustaining Memberships of \$25 provide additional funds for the support of mill restoration efforts within the chapter.

Organizational memberships are available for \$50 and provide sponsor listing on our website. Each membership provides the quarterly newsletter, information on mills and seminars, tax deductible dues, and invitation to mill tours and semi-annual meetings. Please submit your payment promptly so you can continue to enjoy your membership benefits. Encourage like-minded friends to consider joining as well. Also check out our website for more pictures and information.

MEMBERSHIP SUBSCRIPTION FORM

Please enroll me as a member of the Mid-Atlantic Chapter of the Society for the Preservation Of Old Mills

Please Print

Name: _____ Milling Connection: _____

Address: _____

City: _____

State/Zip Code _____

Telephone Number _____

E-mail Address _____

(newsletters are emailed or posted in web site when possible to save postage)

New Subscription Renewal

Please Check One:

Individual, Member of SPOOM - \$10.00

Individual, Not Member of SPOOM - \$15.00

Sustaining Membership - \$25.00

Please indicate level of membership and mail this form with your check or money order to **Membership Manager, 613 Green Valley Road, York PA 17403 . Please make your checks out to Mid-Atlantic Chapter.** The Mid-Atlantic Chapter is a member in good standing of the Society for the Preservation of Old Mills and serves, Maryland, Delaware, Pennsylvania, Virginia, and the District of Columbia